

## COA of recombinant human pepsinogen I

**Short name:** PGI, PGA

**Catalog number :** B0401-04-01

**Lot number:**

**Source:** recombinant expression

**Form:** liquid

**Buffer:** sterile 1×PBS (pH7.4),0.1%NaN<sub>3</sub>

**Concentration:** mg/ml(Lot specific, determined by A280)

**Purity:** >95% by SDS-PAGE

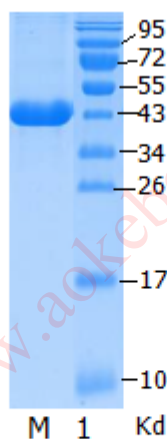
**Immunoreactivity:** reaction with monoclonal antibodies specific to human pepsinogenI molecule (e.g. Medix:Anti-hPG I 8003 and Anti-hPG I 8009) in a sandwich ELISA.

**Applications:** Immunogen, calibrator in immunoassays, in vitro studies

**Storage:** -20°C for two years (4°C for frequent usage, -20°C for long-term storage. Avoid repeated freeze-thaw cycles).

**Tips :** The samples usually form an inhomogeneous state after freezing and thawing. Usually, protein concentration in the lower layer is higher than that of the upper layer. In order to get an uniform sample concentration, mix the sample gently with pipette and centrifuge it before use please.

**Figure:**



M : protein marker ;

1 : recombinant human pepsinogen I ;

SDS-PAGE of recombinant human pepsinogen I

Wuhan Aoke Botai Biotechnology Co.,Ltd

Website: [www.aokebotai.com](http://www.aokebotai.com)

Postal Code: 430000 Tel : 86-27-87002913

E-mail: [wuhanaokebotai@aokebotai.com](mailto:wuhanaokebotai@aokebotai.com)

Add.: 5Floor, 25<sup>th</sup> Building,Optical Valley International Biomedical accelerator, Wuhan,China