

COA of recombinant human Creatine kinase(muscle-brain type)

Short name: CKMB

Catalog number : B0205-01-01

Lot number:

Source: recombinant expression

Form: liquid

Buffer: sterile 100mM Tris-HCl (pH8.0), 150mM NaCl, 0.1%NaN₃

Concentration: mg/ml (Lot specific, determined by A280)

Purity: >90% by SDS-PAGE

Immunoreactivity: Reaction with paired-antibodies (Roche) specific to human CKMB molecule.

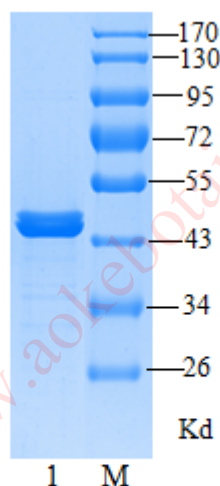
Applications: Immunogen, calibrator in immunoassays, in vitro studies.

Storage: 4°C for one year. Avoid repeated freeze-thaw cycles.

Tips : The samples usually form an inhomogeneous state after freezing and thawing.

Usually, protein concentration in the lower layer is higher than that of the upper layer. In order to get an uniform sample concentration, mix the sample gently with pipette and centrifuge it before use please.

Figure:



M: protein marker;

1: recombinant human CKMB;
SDS-PAGE of human CKMB