

## COA of recombinant human Prolactin

**Short name:** PRL

**Catalog number:** B0602-04-01G

**Lot number:**

**Source:** recombinant expression

**Form:** liquid

**Buffer:** 50mM Tris-HCl (pH8.0), 150mM NaCl, 20% glycerol

**Concentration:** mg/ml(Lot specific, determined by A280)

**Purity:** >95% by SDS-PAGE(two major bands due to glycosylation heterogeneity)

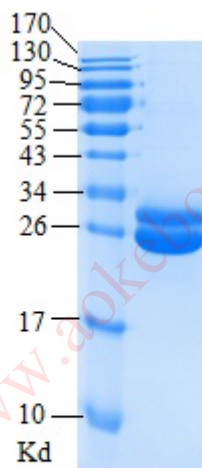
**Immunoreactivity:** reaction with monoclonal antibodies specific to human PRL molecule.

**Applications:** Immunogen, calibrator in immunoassays, in vitro studies

**Storage:** -20°C for two years(4°C for frequent usage, -20°C for long-term storage. Avoid repeated freeze-thaw cycles).

**Tips :** The samples usually form an inhomogeneous state after freezing and thawing. Usually, protein concentration in the lower layer is higher than that of the upper layer. In order to get an uniform sample concentration, mix the sample gently with pipette and centrifuge it before use please.

**Figure:**



M: protein marker;

1: recombinant human PRL;

SDS-PAGE of recombinant human PRL