

## COA of recombinant human CysC

**Cat :** B0101-02-01

**Lot No. :**

**Source:** recombinant expression

**Form:** liquid

**Buffer:** sterile 1×PBS (pH7.4), containing 0.1% sodium azide

**Concentration:** mg/ml(determined by A280)

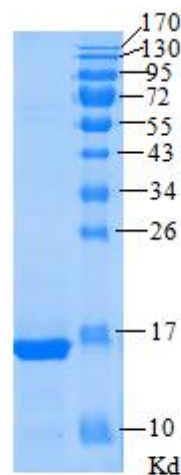
**Purity:** >95% by SDS-PAGE

**Immunoreactivity:** reaction with monoclonal/polyclonal antibodies specific to human CysC molecule.

**Applications:** Immunogen, calibrator in immunoassays, in vitro studies

**Storage:** 2-8°C for frequent usage, -10°C to -30°C for long-term storage. Avoid repeated freeze-thaw cycles.

**Tips:** The samples usually form an inhomogeneous state after freezing and thawing. Usually, protein concentration in the lower layer is higher than that of the upper layer. In order to get an uniform sample concentration, mix the sample gently with pipette and centrifuge it before use please.



M: protein marker;

1: recombinant human CysC

SDS-PAGE of recombinant human CysC

Wuhan Aoke Botai Biotechnology Co.,Ltd

Add: 5Floor, 25<sup>th</sup> Building, Optical Valley International Biomedical accelerator,  
Wuhan, China

Postal Code: 430000

E-mail: wuhanaokebotai@aokebotai.com

Tel: 86-27-87002913

Website: www.aokebotai.com