

COA of recombinant human Lp-PLA2

Cat No: B0208-04-01

Lot No.:20220806

Source: recombinant expression

Form: liquid

Buffer:sterile 1×PBS (pH7.4), 0.1%Preservatives I

Concentration: 0.79mg/ml(determined by A280)

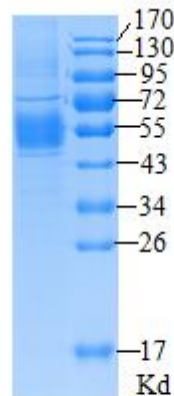
Purity: >90% by SDS-PAGE

Immunoreactivity: reaction with monoclonal antibodies specific to human Lp-PLA2 molecule.

Applications: Immunogen, calibrator in immunoassays, in vitro studies

Storage: 2-8°C for frequent usage, -10°C to-30°C for 4years. Avoid repeated freeze-thaw cycles.

Tips: The samples usually form an inhomogeneous state after freezing and thawing. Usually, protein concentration in the lower layer is higher than that of the upper layer. In order to get an uniform sample concentration, mix the sample gently with pipette and centrifuge it before use please.



M: protein marker;

1: recombinant human Lp-PLA2;

SDS-PAGE of recombinant human Lp-PLA2

Wuhan Aoke Botai Biotechnology Co.,Ltd

Add: 5Floor, 25th Building,Optical Valley International Biomedical accelerator,
Wuhan,China

Postal Code: 430000

E-mail: wuhanaokebotai@aokebotai.com

Tel: 86-27-87002913

Website: www.aokebotai.com