

COA of recombinant human CKBB

Code: B0210-01-01

Lot No.:

Source: recombinant expression

Form: liquid

Buffer: sterile 1×PBS (pH7.4),0.1%Preservatives I , 20% Glycerol

Concentration: mg/ml(determined by A280)

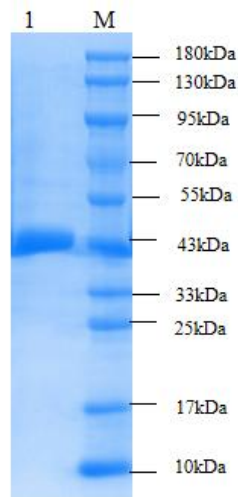
Purity: >90% by SDS-PAGE

Immunoreactivity: reaction with monoclonal antibody specific to human CKBB molecule.

Applications: Immunogen, calibrator in immunoassays, in vitro studies

Storage: 2-8°C for frequent usage, -10°C to-30°C for long-term storage. Avoid repeated freeze-thaw cycles.

Tips: The samples usually form an inhomogeneous state after freezing and thawing. Usually, protein concentration in the lower layer is higher than that of the upper layer. In order to get an uniform sample concentration, mix the sample gently with pipette and centrifuge it before use please.



M:Protein marker

1: recombinant human CKBB protein
SDS-PAGE of recombinant human CKBB

Wuhan Aoke Botai Biotechnology Co.,Ltd

Add: 5Floor, 25th Building,Optical Valley International Biomedical accelerator, Wuhan,China

Postal Code: 430000 E-mail: wuhanaokebotai@aokebotai.com

Tel: 86-27-87002913 Website: www.aokebotai.com