

COA of recombinant human CKMM

Code: B0206-01-01G

Lot No.:20220330

Source: recombinant expression

Form: liquid

Buffer: 50mM Tris-HCl,150mM NaCl, 20% Glycerol (pH8.0)

Concentration: 2.69mg/ml(determined by A280)

Purity: >90% by SDS-PAGE

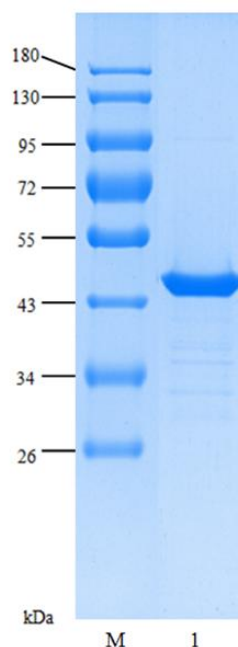
Immunoreactivity: reaction with monoclonal antibody specific to human CKMM molecule.

Applications: Immunogen, calibrator in immunoassays, in vitro studies

Storage: 2-8°C for frequent usage, -10°C to-30°C for 4 years. Avoid repeated freeze-thaw cycles.

Tips: The samples usually form an inhomogeneous state after freezing and thawing.

Usually, protein concentration in the lower layer is higher than that of the upper layer. In order to get an uniform sample concentration, mix the sample gently with pipette and centrifuge it before use please.



M: Protein marker
1: recombinant human CKMM
SDS-PAGE of recombinant human CKMM

Wuhan Aoke Botai Biotechnology Co.,Ltd

Add: 5Floor, 25th Building,Optical Valley International Biomedical accelerator, Wuhan,China

Postal Code: 430000 E-mail: wuhanaokebotai@aokebotai.com

Tel: 86-27-87002913 Website: www.aokebotai.com